

Saddle Rock North post-wildfire (7/6/14) photo monitoring

Skyline Drive Wildfire

180 acres

July 6-7, 2014

Started at Skyline Drive
and moved S & SW to
Saddle Rock City Park

Wenatchee World Photo
Gallery:

<https://www.wenatcheeworld.com/news/2014/jul/06/photo-gallery-brush-fire-wenatchee/>

Photo: July 11, 2015



Source: Wenatchee World, July 7, 2014 <https://www.wenatcheeworld.com/news/2014/jul/06/skyline-drive-fire-lights-foothills/>

— Eight homes on Skyline Drive were evacuated early Sunday morning as a brush fire moved up the hillside behind them, spreading to several ridge lines and creating a fiery glow visible from throughout the Wenatchee area. The fire, reported at 2:15 a.m., came within 20 feet of one house in the 1500 block of Skyline Drive, said fire spokeswoman Kay McKellar.

No structures had burned as of 6 a.m. Numerous residents along Skyline Drive were told to be ready to evacuate and fire officials were beginning to tell residents up No. 2 Canyon the same thing at 6 a.m.

Officers woke residents at three of the homes first threatened by the fire and told them they needed to leave said. Firefighters stationed trucks at each of the residences, said Sgt. Edgar Reinfeld of the Wenatchee Police Department. Winds were calm early Sunday, but the National Weather Service predicted a west wind would blow 8 to 13 mph later in the day. The cause of the fire was under investigation.

About 100 firefighters were on the fire scene Sunday morning, McKellar said.

In addition to many firefighters from Chelan and Douglas counties, they included crews from the U.S. Forest Service and the state Department of Natural Resources.

At dawn, a helicopter from Chelan County Fire District 1 was dropping water on the fire. The Red Cross was opening a shelter at the Seventh-day Adventist Church at Fifth Street and Western Avenue.

Source: Wenatchee World, July 8, 2014 <http://www.wenatcheeworld.com/news/2014/jul/08/skyline-fire-snuffed-trails-reopen/>

WENATCHEE — Roads and trails near the charred hillside of Sunday's Skyline Drive Fire are clear and open for public use. Roads and trails reopened around 6 p.m. Monday when the last of the firefighting crews pulled out, said Rich Magnussen, Chelan County Emergency Management specialist.

The Skyline fire was one of a handful of big and sometimes dangerous fires ignited in North Central Washington during the Fourth of July holiday weekend. ...

At least 15 small fires caused by fireworks were also reported in the Wenatchee Valley on the Fourth of July alone. Authorities have not yet announced a cause for the Skyline Drive Fire, although an ignition point has been pinpointed just off Skyline Drive. Investigators with the state Department of Natural Resources are expected to issue a report in the next few days, Magnussen said.

The blaze was reported around 2:15 a.m. Sunday and quickly threatened homes as it swept up the hillside. The fire also had the potential to threaten homes in No. 2 Canyon. No structures were damaged, but on Sunday eight homes along Skyline Drive were placed under Level 3 evacuation orders (residents advised to leave) due to expected high winds. Another 60 homes in No. 2 Canyon received Level 1 notices (be alert to nearby fire) and were urged to prepare for evacuation. All evacuation notices were lifted by 10 a.m. Monday.

About 100 firefighters hit the blaze hard on Sunday with aerial water drops, pumper trucks and hand crews. Crews successfully defended firelines through Sunday afternoon and worked through the evening and into Monday to extinguish hot spots, Magnussen said.

Photo points and baseline photos were established at Saddle Rock in 2011, as part of the Baseline Management Report.

A subset of these points were selected to use to document post-2014 wildfire habitat change: P1, P2, P3, and P9.

Map of Photo Points and Mine/Waste Rock Sites

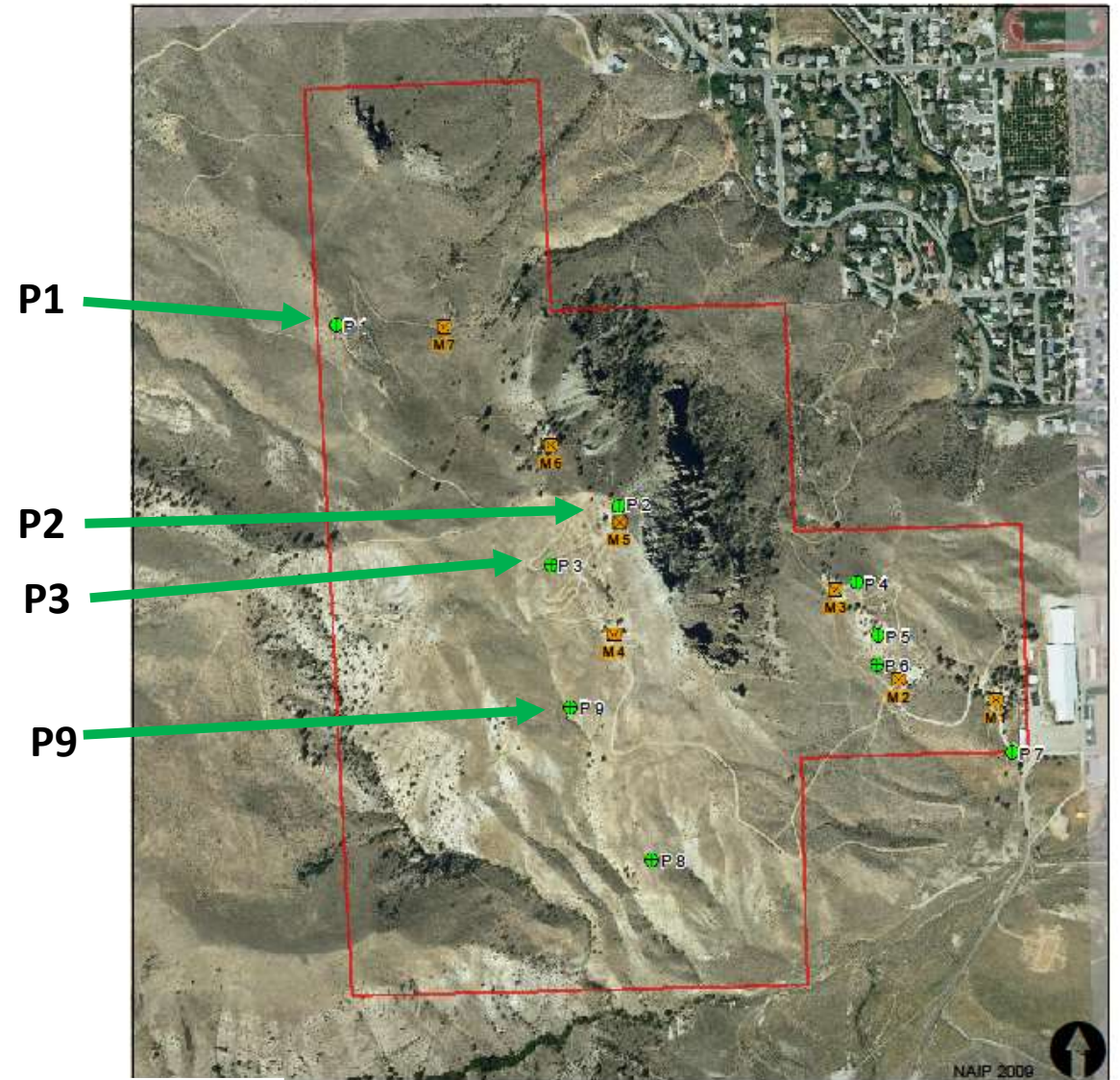
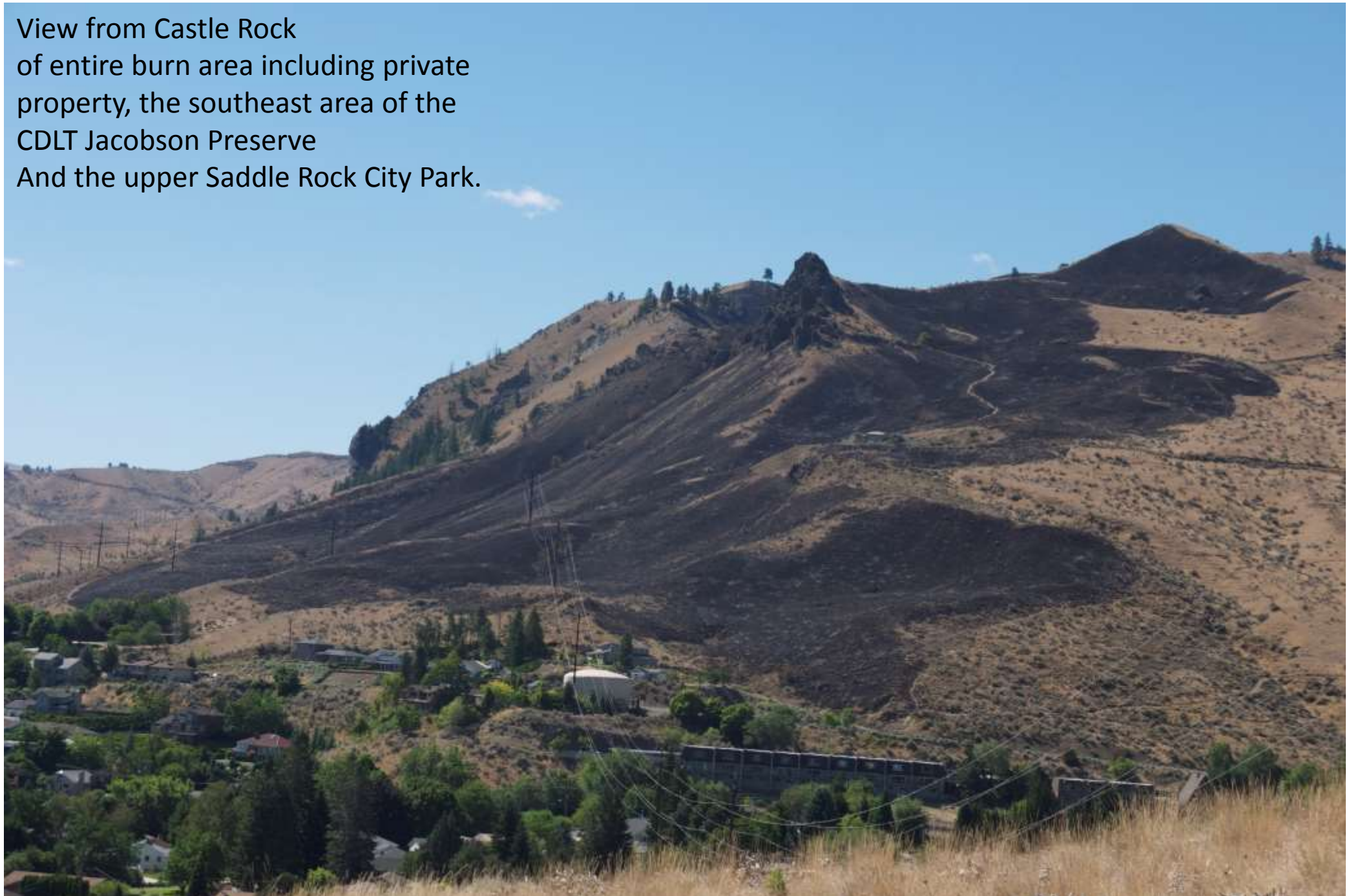


PHOTO PT. MINE SITE	LAT	LONG	Y_PROJ	X_PROJ	DATE-TIME	NOTE	BEARING-DEGREES
P 1	47.40417475	-120.34543438	5253496	700283	14-APR-11 10:25:59AM	high point in PUTR2	160 200 90
P 2	47.40115726	-120.33894477	5253178	700784	14-APR-11 11:02:18AM	top of overlook	280 194 114
P 3	47.40024992	-120.34058796	5253073	700664	14-APR-11 11:21:21AM	T-post welded plate	60 126 154
P 9	47.39550300	-120.34646091	5252530	700239	25-MAY-11 1:18:03PM	T-post with plate - SR 5A 5B	50 140 220

 Photo_Point
  Mine - Waste Rock Site

View from Castle Rock
of entire burn area including private
property, the southeast area of the
CDLT Jacobson Preserve
And the upper Saddle Rock City Park.



July 11, 2014
4 days post-fire

P1 SR1 90

4 days post fire

July 11, 2014



P1 SR1 90

9 months post-fire

Mar. 31, 2015



P1 SR1 90

2 years post-fire

July 25, 2016



P1 SR1 90

3 years post-fire

July 19, 2017



P1, SR1, 160

4 days post-fire

July 11, 2014



P1, SR1, 160

9 months post-fire

Mar. 31, 2015



P1, SR1, 160

2 years post-fire

July 25, 2016



P1, SR1, 160

3-years post-fire

July 19, 2017



P1, SR1 200

4 days post fire

July 11, 2014



P1, SR1 200

9 months post-fire

Mar. 31, 2015



P1, SR1 200

2 years post-fire

July 25, 2016



P1, SR1 200

3 years post-fire

July 19, 2017



P2 SR2 280

4 days post-fire

July 11, 2014



P2 SR2 280

9 months post-fire

Mar. 31, 2015



P2 SR2 280

2 years post-
fire

July 25, 2016



P2 SR2 280

3 years post-fire

July 21, 2017



P2 SR2, 194

4 days post-fire

July 11, 2014



P2 SR2, 194

9 months post-fire

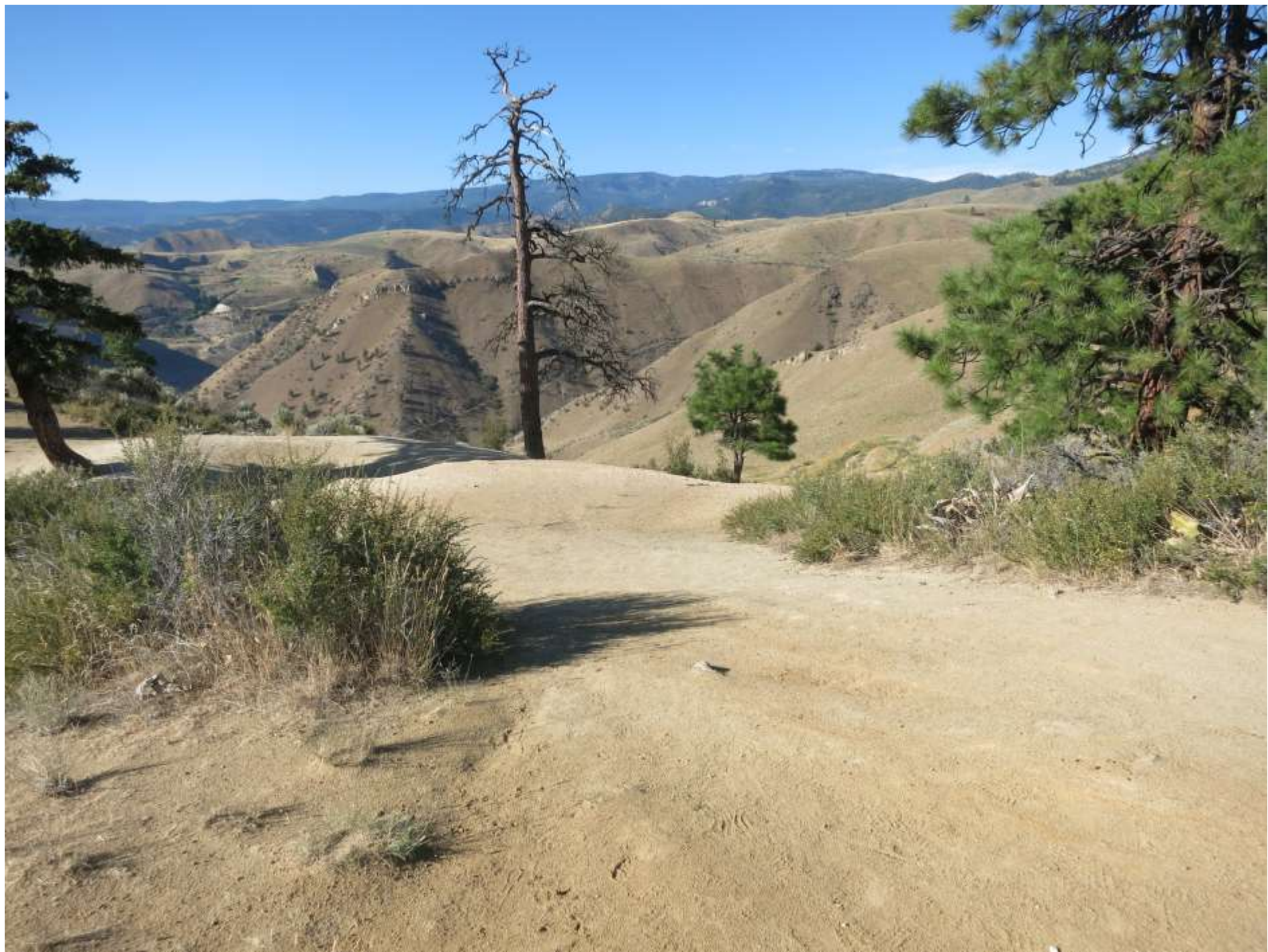
Mar. 31, 2015



P2 SR2, 194

2 years post-fire

July 25, 2016



P2 SR2, 194

3 years post-fire

July 19, 2017



P2, SR2 280

4 days post-fire

July 11, 2014



P2, SR2 280

9 months post-fire

Mar. 31, 2015



P2, SR2 280

2 years post-fire

July 25, 2016



P2, SR2 280

3 years post-fire

July 19, 2017



P3, SR3 60

4 days post-fire

July 11, 2014



P3, SR3 60

9 months post-fire

Mar. 31, 2015



P3, SR3 60

2 years post-fire

July 25, 2016



P3, SR3 60

3 years post-fire

July 19, 2017



P3 SR3 216

4 days post-fire

July 11, 2014



P3 SR3 216

9 months post-fire

Mar. 31. 2015



P3 SR3 216

2 years post-fire

July 25, 2016



P3 SR3 216

3 years post-fire

July 19, 2017



P3 SR3 154

4 days post-fire

July 11, 2014



P3 SR3 154

9 months post-fire

Mar. 31, 2015



P3 SR3 154

2 years post-fire

July 25, 2016



P3 SR3 154

3 years post-fire

July 19, 2017



P9 SR22 50

4 days post-fire

July 11, 2014



P9 SR22 50

9 months post-fire

Mar. 31, 2015



P9 SR22 50

2 years post-fire

July 25, 2016



P9 SR22 50

3 years post-fire

July 19, 2017



P9 SR22 140

4 days post-fire

July 11, 2014



P9 SR22 140

9 months post-fire

Mar. 31, 2015



P9 SR22 140

2 years post-fire

July 25, 2016



P9 SR22 140

3 years post-fire

July 19, 2017



Saddle Rock North trail junction

2 weeks post-fire

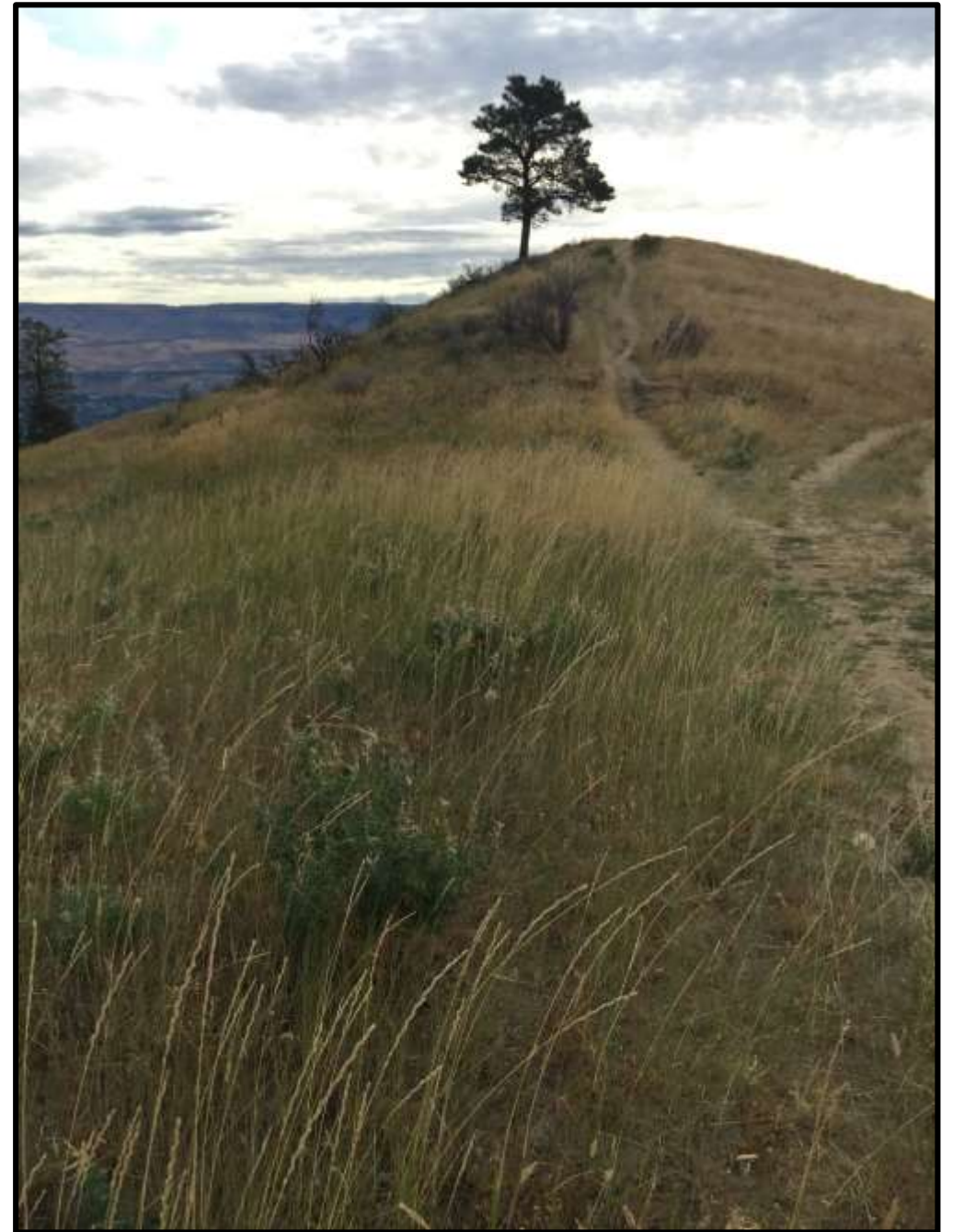
July 20, 2014



Saddle Rock North trail junction

1 year post fire

July 13, 2015



Saddle Rock North trail junction

2 years post fire

July 15, 2016



Saddle Rock North trail junction

3 years post fire

July 19, 2017



Saddle Rock summit looking North

2 weeks post-fire

July 20, 2014



Saddle Rock summit looking North

1 year post-fire

July 13, 2015



Saddle Rock summit looking North

2 years post-fire

July 15, 2016



Saddle Rock summit looking North

2 years post-fire

July 21, 2017



CDLT staff will continue to take annual post-wildfire photos to continue monitoring the natural regrow of native shrub-steppe plants after the Skyline Drive Fire at Saddle Rock.

Restoration efforts are on-going and include

- erosion control
- weed management
- trail user management



July 11, 2014
4 days post-fire