

## 30 YEARS OF WORKING TOGETHER FOR CONSERVATION *by Eliot Scull, CDLT Founding Board Member*

Margaret Mead's quote, "Never doubt that a small group of thoughtful, committed citizens can change the world; indeed, it's the only thing that ever has," may be overused, but it applies to the Chelan-Douglas Land Trust.

The Land Trust's creation in 1985 came about because a few community members worried about the Wenatchee Valley as it faced rapid growth, minimal land-use planning, and declining fish populations. Regardless of whether we were recent migrants to the valley or from long-established families, we all shared a love of the undeveloped hills and the natural waterways surrounding this special place.

Unrestricted growth vs. growth management, property rights vs. land-use restrictions, development vs. conservation, private vs. public land ownership were all controversial issues and county government struggled over competing interests and opinions.

Our small band of conservationists believed the area needed an organization working to protect our natural resources and felt these resources were vital to our

quality of life and our long-term economic vitality. We recognized that clean air, pure water, abundant open space, and healthy wildlife populations created communities where businesses could flourish because these were places where people wanted to live.

Back then, it wasn't an easy sell. Many in the community felt we were trying to control people's property rights, take land off the tax rolls, and stifle development. We were viewed with suspicion by county government and local business leaders.

Through the 80's and most of the 90's we struggled to establish trust with the community and to hold an underfinanced organization together.

Things started to change in the late 90's with the hiring of an executive director and the creation of a downtown office, which led to a larger profile. Meanwhile, the demographics and attitudes of the community changed – people *were* drawn here for quality of life issues – and the nation as a whole embraced the land trust model as a way that communities could conserve local lands they cared about.

*...continued on page 8*

# LOOKING FORWARD, WITH CONFIDENCE & VITALITY

Bob Bugert  
Executive Director



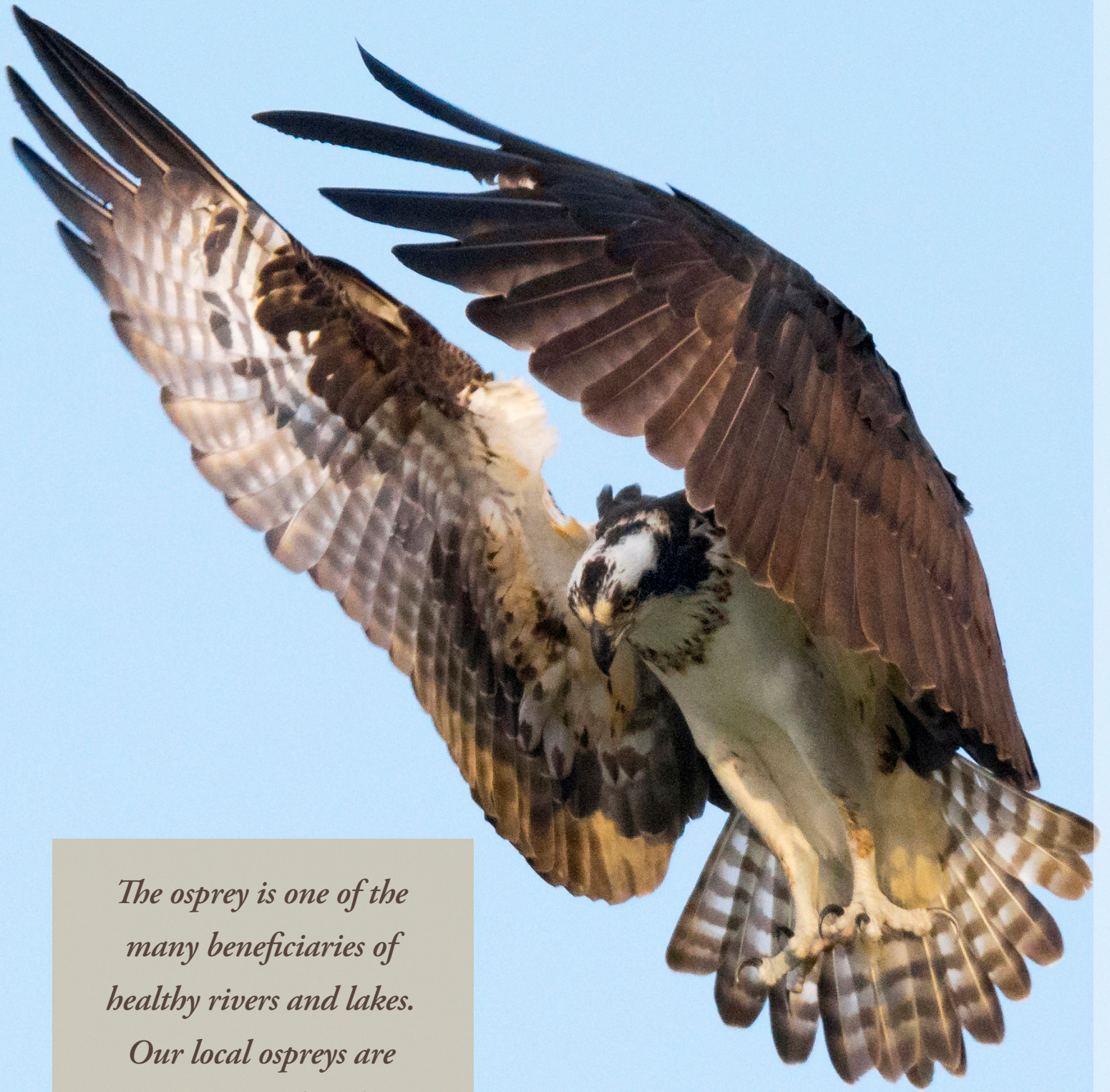
The time is right. We now have an opportunity to create a regional economy that is largely sustainable and within the natural limits of our ecosystems. Over the past three decades since the founding of the Land Trust, people have moved to this region for its outstanding quality of life and natural beauty. Those very traits are at risk because of the pressures of increased growth and demand on our natural resources. Many in our region are increasingly aware of this situation, and understand the strong and inextricable link between a healthy economy and healthy environment. To that end, there is growing support for the work we do.

Over the past fifteen months, our Board of Directors thoughtfully considered many of these issues facing our region's natural areas.

*We deliberated on how we can engage everyone in protecting and cherishing our lands and waters so they remain as the binding thread in the fabric of our region.*

With keen insight, dialogue, and support from many of you—trusted members of our community—we crafted a strategic plan to guide our work through 2020 (this plan is now available on our website: [www.cdlandtrust.org](http://www.cdlandtrust.org)).

The Land Trust is diversifying our tools and funding sources; we are broadening demographic reach and regional collaboration; and we will bolster our organizational capacity and sustainability. We believe that the next five years of work laid out in this plan will take our organization to new levels of service to our community. Please review this strategic plan that will guide our work, as we are confident you will join us in creating this preferred future for North Central Washington. With your commitment, support and passion, together we will accomplish great things in the next few years!



*The osprey is one of the many beneficiaries of healthy rivers and lakes.*

*Our local ospreys are now starting their long migration to Central & South America.*

Photo by Frank Cone



## "LOOK, A GREAT BLUE HERON!"

A group of kids and their parents gathered at the railing over an alcove on the Entiat River. They pointed at the bird, half-hidden in the cattails. One parent shared a story about watching great blue herons when she was a child, and another pointed out a tree that had held many heron nests in the spring.

Walking with a young girl named Aspen and her mother later that day, we came across a fledgling bird on a dirt road. Cars were passing through, and the bird was in danger of being hit. With my encouragement and her mother's permission, Aspen gently scooped up the little ball of brown and yellow feathers

and moved it to the cover of trees away from the road. She's not likely to forget this experience soon.

These families were taking part in the Entiat River Appreciation Day, part of the Land Trust's new *Kids & Nature Connections* program and a partnership with Cascadia Conservation District.

If you are receiving this newsletter, chances are you can think back to a time during your childhood where you felt a strong sense of wonder in nature. Perhaps it was on a family camping trip staring up at a giant cedar, or maybe it was an encounter with a mule deer in our very own Wenatchee Foothills.



The Land Trust's *Kids & Nature Connections* program aims to give the kids of today that same opportunity to fall in love with nature. Because when children have chances to nurture their sense of wonder through experiences like these, they will continue to take care of their special places as adults - just like you do today.

*By observing aquatic insects up-close, kids learned that a river is so much more than just water and fish.*

# WELCOME NEW MEMBERS

*February 2015 through August 2015, these individuals have joined the Land Trust. Thank you for your generous support!*

John & Charlotte Allen  
Robert & Sarah Alsdorf  
JoAnn Anderson  
Laverna Armintrout  
Heather Bailey  
Bill & Petra Barclay  
Breanna Black  
Randall Blakley  
Jim & Eileen Bone  
Christine Bosa  
Reese & Courtney Bradburn  
Sarah Brass  
Eric & Shelley Brodersen  
Michael Brookman  
Alex Bugert  
Cate Burgess  
Emelia Burgess  
Chase Burgett  
Andrea Burkhart  
Liz & Sophia Butowicz  
Michael Cammack  
Rafael & Teresa Cerrillo  
Nick & Mary Ceto  
Kristy Clare  
John & Kathleen Colvard  
Elizabeth Linnell  
Dana Courtney & Bob MacGregor  
Brian Crane  
Amber Crocker  
Donna Daus  
Bruce & Julie Davies  
Graig Davis  
Keri Davis  
Tom Deal  
Sara Deason  
Maria Dorsey  
Gary & Mary Drobnack  
Mike & Mendy Droke  
Denis Du Bois  
Matthew Dudgeon  
McCaleb Eifert  
David Elwood  
Keisha Engley  
Kerry Farrell  
Cory Feil  
Becky Fevold  
Brian & Liz Foster

Emily Gale  
Wade & Judy Gano  
Nathan Getzin  
Lisa Gilbert  
Teagan Gonzalez  
Theresa Gooch  
Jim & Debi Gray  
Everett & Jessica Green  
Kristine Gregory  
Jeff Grizzel  
Bridget & Garrett Grove  
Justin Hambleton  
Faby Hamilton  
Christine Hanson  
Bob Hartl  
Andrea Hartley  
Kathy Hay  
Jamie Helgeland  
Kyle & Ann Hendrickson  
Heather Hirschi  
Nancy Hoefer  
Scott Hopkins  
Marissa Howat  
Rita Hruby  
Harlow Huber  
Dan Ireland  
Maureen Johnson  
Robert Johnson  
Robin Johnson  
Victoria Jones  
Leah Jorgensen  
Amy Kerker  
Shalyn Kessler  
Elizabeth Keyser  
Christina Kimmel  
Donald & Carol King  
Carolyn Kinkade  
Richard Knowles  
John & Karen Krehbiel  
Sue LaChapelle  
Butch Lane  
Skip Laney  
Angela Lashley  
Doris LeCount  
Tammy Lianu  
Mark & Catherine Lindgren  
Brad & Marci Lyon

Marya, Maite & Kalen Madsen  
Shelli Maitland  
Dawn Malikowski  
Stacey Malstead  
Maria Norbury Foundation  
Chris Marich  
Ben Martin  
Joan McDonnell  
Stanley McKnight  
Alison McLellan & Mike Miller  
Fred Meiner  
Udel & Manoella Mendoza  
Eric Messerschmidt  
Chy Mettler  
Carl & Sally Middleton  
Rob, Holly & Josie Miller  
Seth Miller  
Richard & Judith Milner  
Josh Mitchell  
Jeffrey & Renee Monson  
Jenny Montgomery  
Ian Morgan  
Rick Mueller  
Megan Murphy  
Juniper Nammi  
North Cascades Bank  
Jerry & Kayla Oakes  
John Oglione  
Paula Ortiz  
Harold & Shirley Ostenson  
Josh & Sarah Parker  
Chelan Pauly  
Kristie Pedersen  
Asucena Perales  
Maria Perales  
Carol Pierce  
Scott & Wendy Ptolemy  
Jared & Candy Purcell  
Edward & Jeannette Quaid  
Lynn Rasmussen  
Jillian Reiner  
David Reinholz  
Tana Rice  
Erling & Wanda Rivedal  
Tim Roach

Katherine Root  
Ryan & Katie Rudd  
Rosario Sandoval  
Jenny Sass & Mac Fraley  
Tim Scheer  
Gary & Marie Schulze  
Scott Schwehm  
Lonnie & Jordan Schwirtlich  
Teddie & Breanna Shales  
Ryan Shimp  
John & Marnie Simmons  
Kara & Graham Simon  
Marisela Soto  
Jon & Susan Speiker  
Marty & Diane Stanton  
Joshua Stendera  
Justin Stoltzfus  
Lynn Stutzman  
Devin Super  
Steve Taber  
Marcus & Andrea Talley  
Pete Teigen  
Pat & Rick Thirlby  
Rachel Thody  
Roland Tiedemann  
Michael Tonge  
Trueman & Shirley Tucker  
Eden Turla  
Michelle Turner  
Mark Van Reenen  
Crystal VanCaster  
Lorrie VanHeyningen  
Debra Vaughn  
Hilda Vivanco  
Mark Wade  
Michael & Jo Ann Walker  
Dianna Wheeler  
Robert & Anne White  
Paul Willard  
William Willcock  
Amy Williams  
Elizabeth & Dave Wilson  
Nik Winjum  
Melissa Wolf  
Darryl Wolfe

# 30 Years of Working Together for Conservation!

*a few highlights of what we've accomplished together...*



**2000 – Jacobson Preserve**  
Dr. John & Mrs. Karen Jacobson donate 35 acres to CDLT at Skyline Dr.

About a dozen Wenatchee-area residents meet at Mark and Rosemary Shipman's house and move ahead with plans to form the **Chelan-Douglas Land Trust** with Mark Shipman as the first president.



**1991 – Peshastin Pinnacles is dedicated as a state park.** Beginning in 1986, CDLT leads fundraising and meetings resulting in the purchase of the Pinnacles from private landowners by The Trust for Public Land.



**1994 – The 10-mile Apple Capital Recreation Loop Trail is completed.**

**1999 – CDLT hires its first paid staff member**



**2001 – 32 acres viewshed the Wenatchee grassland**

1985 ----- 1990 ----- 1995 ----- 2000 -----

**1989 – Complete the Loop Coalition** is born at a Land Trust meeting and spun off as a separate organization to campaign for a trail on the east side of the Columbia River after WSDOT decides to surplus & sell the land.

**1990s —**  
Despite the Peshastin Pinnacles success and growing support for the Complete the Loop campaign, there are challenging times for the CDLT and the conservation movement in the Wenatchee Valley.

**1999 — CDLT membership: 40**



**1995 – Access to Spider Meadows** is protected from planned logging & housing development by the purchase of 320 adjoining acres.



**2000 – Nason Ridge**  
Lake Wenatchee residents seek help from CDLT to protect Nason Ridge from proposed logging. CDLT helped mediate a compromise and Longview Fibre substantially modified their harvest to address the local concerns.



**2002 – White River**  
 protection efforts begin. To date, 527 acres and 4.7 miles of riverfront have been permanently protected.

erve  
 obson  
 along



**2008 – Mountain Home Ridge**, 169 acres above Leavenworth protected.



**2013 – Horse Lake Reserve Dedication**, 1,700 acres permanently protected in the Wenatchee Foothills



**2004 – “Building A Vision”**  
 CDLT and partners organize a 2-day conference exploring our region’s quality of life - it packs the convention center.

– “Save the Sage”  
 es protected for recreation, escape & wildlife habitat in Wenatchee Foothills thanks to boots fundraising campaign.

**2007 — CDLT membership: 603**

**2015 – Upper Wenatchee Community Lands Plan**, Community input is being gathered in preparation for an anticipated change in ownership of 38,000 forested acres in the upper valley.

----- 2005 ----- 2010 ----- 2015 -----



**2001 – Stormy Creek Preserve**  
 CDLT purchases over 420 acres of prime fish & wildlife habitat along the Stillwaters stretch of the Entiat River beginning ongoing protection and restoration efforts.

**2009 – Foothills Community Strategy**, Over 1,600 citizens participate in a 14-month community planning effort to guide conservation, recreation & development in the Wenatchee Foothills.

**2015 — CDLT membership: 1,392**



**2014 – Wenatchee Foothills Campaign** culminates with \$8.6 million raised by over 600 donors to implement priorities identified in the Foothills Community Strategy Plan.

## SLEEPY HOLLOW FIRE

On Sunday, June 28, the Sleepy Hollow Fire swept into Wenatchee destroying homes and businesses and leaving a blackened landscape stretching from the Horse Lake Reserve to Broadview Canyon and Sage Hills. The fire burned 2950 acres including 870 acres of CDLT protected property. The Horse Lake Trailhead along with nearby trails, signs, fences and gates were damaged and four miles of fire line were ploughed through the Horse Lake Reserve.

Despite the destruction and damage of homes and business, the fire burned with light to moderate intensity that blackened the land but did little long term harm to most of our native plants. Sumac is already two feet high in places and the familiar Foothills wildflowers such as balsamroot and lupine will return in the spring. Big sagebrush and bitterbrush will be absent however as these two dominant shrubs are killed by fire. Without these plants, mule deer will lack food and cover this winter and many songbirds that depend on them during the breeding season will be absent next spring.



CDLT staff and volunteers have begun to repair trails and clear burned fences but we have much more work this fall and next year. We need volunteers to help reshape and seed fire lines, rebuild wood fences, remove barbed wire from old farm fences, replace signs, control weeds, and plant 1000 sagebrush and bitterbrush seedlings. If you can help with any of these important projects, look for volunteer opportunities on the CDLT website and e-news.

## 30 YEARS...

*(continued from p. 1)*

By the new millennium we had a growing membership and a staff that was increasingly trusted by the community. That's when our impressive record of conservation easements, purchased lands, community dialogs, educational programs, and natural history outings really began.

I'm astounded by how far this group, with its shaky beginnings, has come. We have earned the respect and trust of most community members on both sides of the political spectrum. And we have demonstrated that a healthy environment does contribute to a healthy economy. So much so that many communities around the Northwest are trying to emulate what we've done here.

I have had a rewarding career in medicine, but the exceptional Land Trust people, past and present, who found focus and purpose in this organization, have not only changed our local world, they have shaped many of the most memorable and empowering experiences of my life.



Eliot Scull is a retired physician. Eliot and Tina Scull are two of the Land Trust's founders and former long-time board members.



## HEALTHY RIVERS NOW AND FOR THE FUTURE

Clean, cold water and healthy habitat along streams are vital for fish, wildlife, and people. Conservation-minded landowners are helping to ensure that our rivers are healthy now and for future generations.

**NASON CREEK** • We are thrilled to share the news of a big win for fish, wildlife, and the waters of Nason Creek. The Land Trust just acquired 73 acres of prime habitat with nearly a mile of riverfront along lower Nason Creek. This project includes 63 acres donated by Grant County PUD, and the adjoining 10 acres purchased from Bob and Darlyn McCarty, owners of the Blue Grouse Lodge, who decided to divide and permanently protect the rear part of their property for conservation.

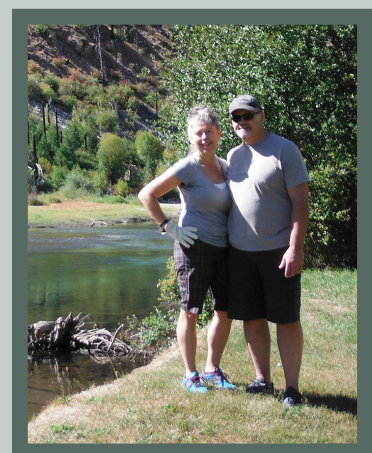
*“Over the years we have enjoyed watching the wildlife and the salmon in and around Nason Creek. Our decision came easily to divide our 20 acres and sell the undeveloped 10 acres to Land Trust – thereby preserving a little part of the area for nature.”*

Years earlier, they sold riverfront property near Snohomish and were not happy with the stewardship of their successors. The McCartys were determined to leave a lasting legacy of conservation.

**ENTIAT RIVER** • Critical side channels and floodplain will now be reconnected to the river thanks to our recent purchase of 13 acres along the Entiat River from the Enlow family. Removing imported fill that currently cuts off much of the property from the river will allow it once again to provide high quality rearing habitat for juvenile salmon and allow the floodplain to fully function again, storing cold water that is gradually released to the Entiat River throughout the year. The Land Trust will partner with other organizations to relocate the house built on the fill and restore the site’s native vegetation.

The Enlow family decided to sell their property a couple of years ago so the Land Trust reached out to them about purchasing it. Tom Enlow shared that, *“when we learned of the restoration plans, it was an easy decision to commit our property and support their vision. The property is unique and deserving of returning to its wild, natural state. Thank you Chelan-Douglas Land Trust!”*

The property is directly across the river from land that the Land Trust already owns, and will provide new public access to the “Stillwaters” section of the river.



Tom & Erin Enlow

#### Officers:

David Visser  
President

John Lehmkuhl  
Vice President

Ann Schaechtel  
Secretary/Treasurer

#### Board:

Andy Dappen  
Suzanne Hartman  
Anne Hessburg  
Paul Hessburg  
Jennifer Korfiatis  
Steven Milner  
Jack Mynatt  
Heather Ostenson  
Geordie Romer  
Hans van Someren Gréve  
Chris Stahler  
Bruce Williams  
John Zanol

#### Legal Counsel:

Todd Kiesz

#### Staff:

Paige Balling  
Donor Relations Assistant  
paige@cdlandtrust.org

Hanne Beener  
Stewardship & Trails Coordinator  
hanne@cdlandtrust.org

Navarre LeRoy  
Accounting  
navarre@cdlandtrust.org

Bob Bugert  
Executive Director  
bob@cdlandtrust.org

Mickey Fleming  
Lands Project Manager  
mickey@cdlandtrust.org

Rebecca Frank  
Stewardship Assistant  
rebecca@cdlandtrust.org

Neal Hedges  
Stewardship Director  
neal@cdlandtrust.org

Sharon Lunz  
Development Director  
sharon@cdlandtrust.org

Jose Luis Marquez  
Stewardship Assistant  
joseluis@cdlandtrust.org

David Morgan  
Watershed Coordinator  
david@cdlandtrust.org

Kathy Peven  
Communications Coordinator  
kathy@cdlandtrust.org

Hillary Schwirtlich  
Membership & Education Coordinator  
hillary@cdlandtrust.org

## TRAILS UPDATE: BLACKENED, BUT STILL BEAUTIFUL

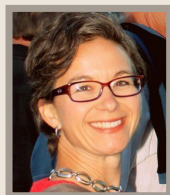
After a great season of trail work this spring with our volunteers, summer swept in full of wildfire. The Horse Lake trailhead sustained some relatively minor damage, and the trails are in good shape, though they are little on the barren side right now! Lupine, grasses, and even a few sagebrush are already starting to regrow.

Expect grasses and forbs (such as *balsamroot* or *buckwheat*) to recover well next spring, but sagebrush and bitterbrush will take a while to come back. With the lack of these plants on the hillsides, it may be tempting to travel cross-country this fall, but we ask that you stay on the trails and avoid further damage to the plant communities.

You can help with some fire recovery efforts this fall; we'll be doing some planting and restoration work, and also rebuilding some key fences and gates that burned. We'll also be tackling our annual fall maintenance along the Foothills trails, and working on improving a trail to the summit of Castle Rock. Keep an eye on our website and enews for upcoming volunteer opportunities, or contact Hanne for more information: [hanne@cdlandtrust.org](mailto:hanne@cdlandtrust.org).



## MEET OUR NEW BOARD MEMBERS



Heather Ostenson

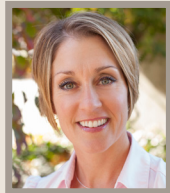
We are delighted to have three energetic and engaged community members join our Board of Directors, serving their first three-year terms. Each brings a wealth of skills and experience. We extend our sincere thanks to **Tina Scull**, **Charlie Naismith**, and **Jennifer Taylor** who fulfilled their terms on our Board of Directors. Each brought tremendous passion and energy to our organization.



Suzanne Hartman

**Heather Ostenson** lives in East Wenatchee. She has recently founded *Balsamroot Baking*. Prior to that, she spent 16 years working as a licensed professional engineer, and was a co-founder and former principal civil engineer of Project Groundwork.

**Suzanne Hartman** is Manager of Communications for Chelan County PUD. She has over twenty years of public relations/public affairs agency experience, and had her own public relations firm for ten years focusing on environmental and sustainability issues.



Jennifer Korfiatis

**Jennifer Korfiatis** owns a freelance marketing and public relations agency in Wenatchee. She also serves as an adjunct professor at Wenatchee Valley College and is a partner in AdventureWenatchee, a local company that promotes activity-based tourism in our area.

Join us for outings, learning opportunities and work parties.  
For details, updates, and to sign-up, go to:  
[cdlandtrust.org/whats-new](http://cdlandtrust.org/whats-new) or call 509-667-9708.

# OUTINGS EVENTS & VOLUNTEER OPPORTUNITIES



## VOLUNTEER

### SATURDAY WORK PARTIES

Trail & restoration  
projects starting  
Sept. 26

*details online*

### TRAIL THURSDAYS

Afternoon trail  
work parties every  
other Thurs.  
starting: Oct 8

*details online*

### eBIRD

New Citizen  
Science project on  
CDLT lands for  
all skill levels

*details coming soon*

### MAKE A DIFFERENCE DAY

Fire restoration  
planting & trail  
work in the  
Foothills

• Oct 24  
9am-3pm



## OUTINGS

*RSVP Required*

### FALL FAMILY HIKES

Saturdays  
times: 9am & 11am

Insect Investigations  
@ Saddle Rock  
• Sept 26

Trails On Fire  
@Horse Lake Reserve  
• Oct 3

Animal Tracking  
& Sign  
@ Saddle Rock  
• Oct 10

### SALMON & NATURALIST WALK

@ Entiat Stormy  
Preserve  
• Oct 3  
9am-12pm

### GEOLOGY WALK

@ Mountain  
Home Ridge  
• Oct 9 1-4pm

### WILDFIRE IN THE FOOTHILLS

• Oct 17  
10am-12pm



## EVENTS

### FILM SERIES

“The Big Burn”  
• Oct 20 7-9pm  
@ Wenatchee  
Valley Museum

### 30TH ANNUAL CELEBRATION DINNER

Don't miss this  
special evening  
commemorating  
30 years of local  
conservation!

• Oct 30 6pm  
@ Wenatchee  
Convention  
Center

### WILDFIRES AND US SUMMIT

Learn what we can  
do to reduce risk of  
loss from wildfires.  
Displays, Q&A,  
presentations  
• Nov 9 4-6pm  
reception to follow  
@ Numerica PAC

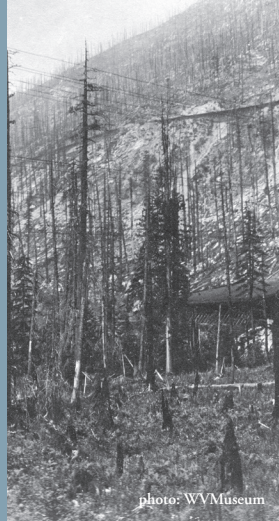


photo: WVMuseum





ADDRESS  
SERVICE  
REQUESTED

NonProfit Org.  
U.S. Postage  
PAID  
Wenatchee, WA  
Permit No. 65

18 N. Wenatchee Ave.  
P.O. Box 4461  
Wenatchee, WA 98807  
(509) 667-9708

[www.cdlandtrust.org](http://www.cdlandtrust.org)



Printed on Recycled Paper - 100% post-consumer waste.



*Join together with your Land Trust community to celebrate our 30th anniversary! Starting at the PAC for appetizers & libations, then across the hall to the newly renovated grand ballroom. A delectable dinner will be prepared by new executive chef, Leonard Silva.*

*Look for your invitation in the mail soon.*

**ANNUAL CELEBRATION DINNER**  
**THE PAC & THE WENATCHEE CONVENTION CENTER**  
**OCTOBER 30, 2015, 6-9PM**

*Let's Party!*

**30th**  
ANNIVERSARY